

dedicated to my son Ernestinho

Travesso

(Naughty)

Tango



Form: AA BB A CC A

♩ = c. 87

Ernesto Nazareth

1913

A

D_m

D_m/C

E⁷/B

B^b7



A⁷

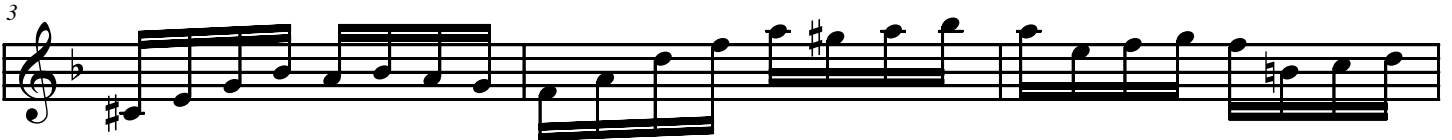
A/G

D_m/F

A⁷/E

D_m

F₆

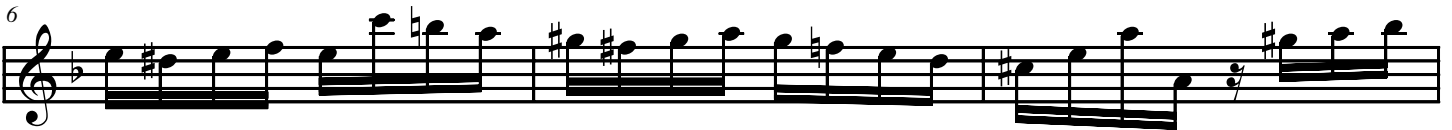


A_m/E

B⁷/D[#]

E/D

A⁷/C[#]



D_m

D_m/C

E⁷/B

B^b7

A⁷

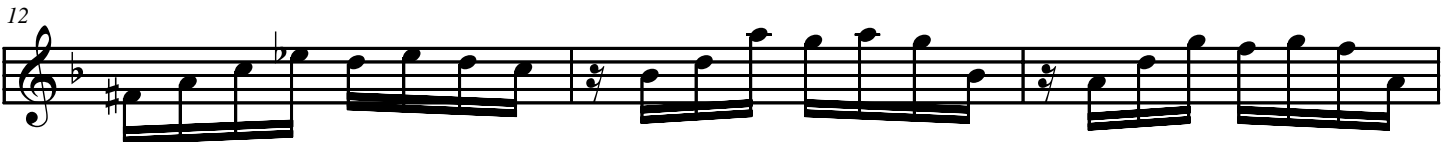
A/G



F[#]dim

G_m

D_m/A



E⁷/B

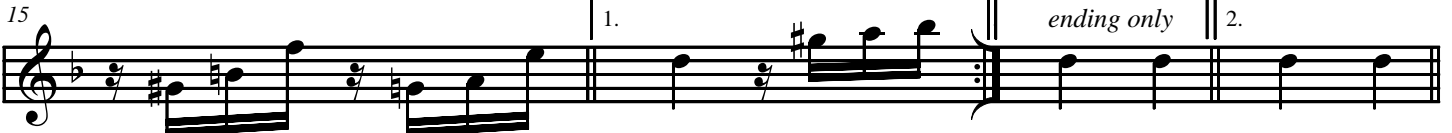
A⁷/C[#]

⊖

D_m

D_m

D_m



Fine

C⁷/G

C⁷

F₆

F₆/A

C⁷/G

C⁷

F



mf gracefully

(C) Copyright of the author in public domain. (C) Copyright do autor em domínio público.

This arrangement and adaptation: (C) Copyright 2007 Global Choro Music (USA) and Global Choro Music Brasil Produções Artísticas Ltda (Brazil)

Este arranjo e adaptação: (C) Copyright 2007 Global Choro Music Corporation (EUA) e Global Choro Music Brasil Produções Artísticas Ltda (Brasil)

All rights reserved. International copyright secured. Todos os direitos reservados.

www.ChoroMusic.com

23 $B\flat_6$ $B\flat_6/D$ F/C F/A $C7/G$ $C7$ F $F\sharp_{dim}$

27 $C7/G$ $C7$ F_6 F_6/A $G_m/B\flat$ $C7$ F F/A

mf

31 $B\flat_6$ $B\flat_6/D$ F/C $D7$ G_m $C7$ F F_{dim}

f

35 F $A7/E$

f

D.S. al $\text{\textcircled{C}}$

Trio

$\text{\textcircled{C}}$ D_m D $D\sharp_{dim}$ $A7/E$ F_{dim} $D/F\sharp$ $E7/B$

mf *cresc.*

41 $B\flat_6$ $A7$ $E7/G\sharp$ A/G $B7/F\sharp$

f

45 E_m E_m/D $F\sharp_7/C\sharp$ B_m $C\sharp_7/B$ $F\sharp_m/A$

50 G_6 D/A $E7/G\sharp$ $A7/G$ $D/F\sharp$ $A7$ $D/F\sharp$

f

D.S. al Fine